



Figure 1.1. Top View of IMU-1221-R02



Figure 1.2. Side View of IMU-1221-R02



Figure 1.3. Top View of IMU-1221-R02



## FEATURES

- Dynamic Compensation, Quadrature Compensation
- Gyro Drift 150°/h
- RS232, RS485, TTL Output Optional
- Wide Temperature Range:  $-40^{\circ}\text{C} \sim +85^{\circ}\text{C}$   
Temperature Compensation
- Small Size:  $2.165 \times 1.46 \times 0.94$  (inch)  
 $55 \times 37 \times 24$  (mm)

## APPLICATIONS

- Dump Truck
- Balance Car
- Stable Platform
- AGV Unmanned Guided Vehicle
- Marine Survey
- Under Water Robot Navigation
- Robots
- Unmanned Aircrafts

## DESCRIPTION

IMU-1221-R02 is a low-cost inertial measurement unit that can measure the angular velocity and acceleration of a moving carrier. The data deviation is estimated by the 6-state Kalman filter with appropriate gain, which is suitable for inertial attitude measurement in motion or vibration state.

IMU-1221-R02 uses highly reliable MEMS accelerometers and gyroscopes, and it uses algorithms to ensure measurement accuracy. At the same time, the sealing design and strict production process ensure that the product can accurately measure movement parameters such as the angular velocity, acceleration and attitude of the carrier in harsh environments. Through various compensations such as nonlinear compensation, quadrature compensation, temperature compensation and drift compensation, the error source of IMU-1221-R02 can be greatly eliminated and the product accuracy level can be improved. BW-IMU50 has a digital interface, which can be easily integrated into the user's system.

## SPECIFICATIONS

**Table 1.**

Parameter		Min.	Typ.	Max.	Unit/Note
Power Supply Voltage			5		VDC
Operating Current			30	40	mA
Operating Temperature Range		$-40$		85	$^{\circ}\text{C}$
Gyro	Resolution		0.01		$^{\circ}/\text{s}$
	Range		$\pm 400$		$^{\circ}/\text{s}$
	Bias Stability at Room Temperature	$<2^{\circ}/\text{h}$ (100s, $1\sigma$ ) $<150^{\circ}/\text{h}$ (10s, $1\sigma$ )			
	Bias Repeatability at Room Temperature	$<50^{\circ}/\text{h}$ ( $1\sigma$ )			
	ARW			0.1	$^{\circ}/\sqrt{\text{h}}$
	Scale Factor Repeatability			100	ppm



Parameter		Min.	Typ.	Max.	Unit/Note
	Scale Factor Non-Linearity			100	ppm
	Bandwidth		100		Hz
Accelerometer	Range X-Y-Z		±2		g
	Resolution		0.01		mg
	Add Zero Offset		0.15		mg
	Bias Stability	0.001mg (25°C, 100s, 1σ) 0.01mg (25°C, 10s, 1σ)			

## ELECTRICAL CONNECTIONS

Table 2. Pin Number, Colors and Functions

No.	1	2	3	4	5
Color					
	RED	BLUE	BLACK	GREEN	YELLOW
Functions	VCC DC 5V	NC	GND	Receive RXD (B, D-)	Send TXD (A, D+)

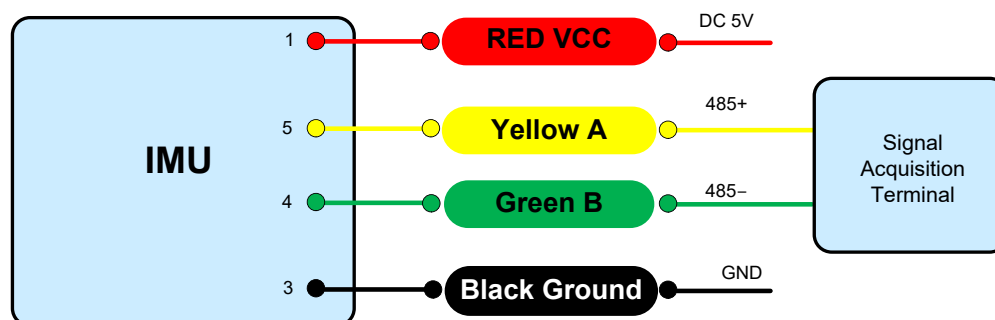


Figure 2. RS 485 Wiring Diagram

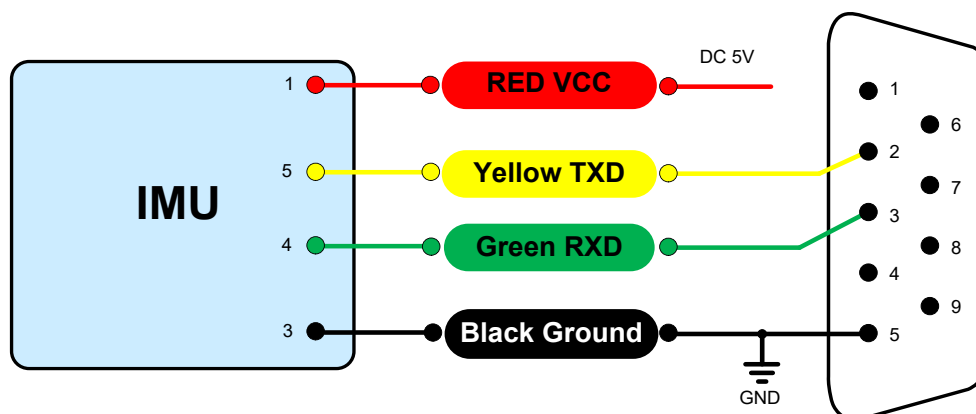


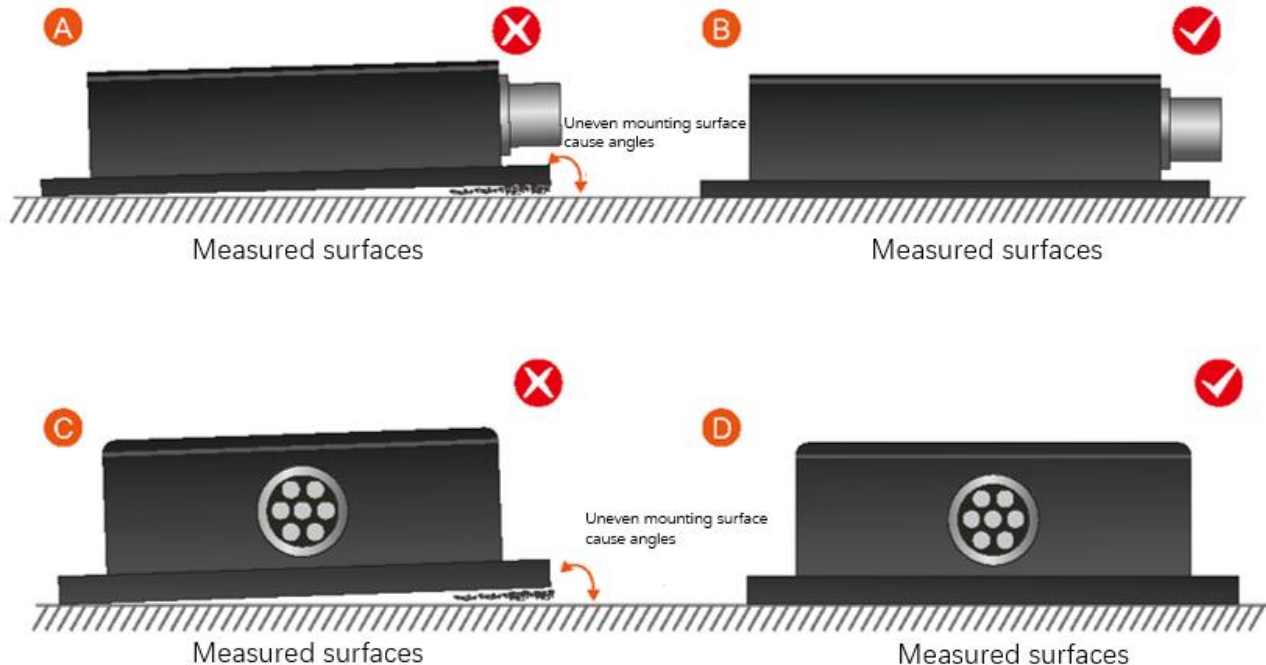
Figure 3. RS 232 Wiring Diagram



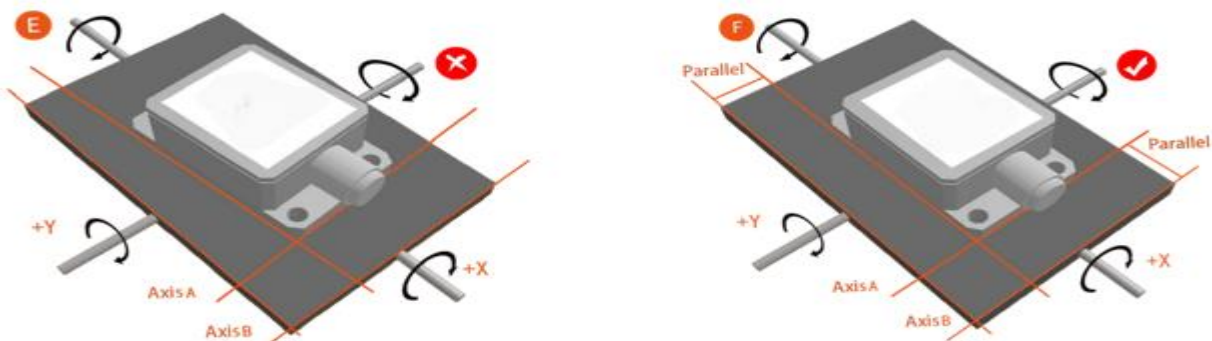
## INSTALLATION

The correct installation method can avoid measurement errors. When installing the sensor, please do the following:

First of all, make sure that the sensor mounting surface is completely close to the measured surface, and the measured surface should be as level as possible. There should be no included angles as shown in Figure A and Figure C. The correct installation method is shown in Figure B and Figure D.



Secondly, the bottom line of the sensor and the axis of the measured object cannot have an angle as shown in Figure E, and the bottom line of the sensor should be kept parallel or orthogonal to the axis of rotation of the measured object during installation. This product can be installed horizontally or vertically (vertical installation needs to be customized), and the correct installation method is shown in Figure F.



Finally, the mounting surface of the sensor and the surface to be measured must be tightly fixed, smooth in contact, and stable in rotation, and measurement errors due to acceleration and vibration must be avoided.



## TEST SOFTWARE

You can download the serial debugging assistant directly on the official website (technical service -> download area), or you can use the more convenient and intuitive host computer software.

IMU 1221 R02 supporting serial port debugging software can connect the inclination sensor on the computer to display the angle. The software debugging interface is shown in the figure below. Using the tilt angle to debug the host computer, you can easily display the current X and Y directions, and you can also modify and set other parameters.

Steps for use:

- ① Connect the serial port hardware of the inclinometer correctly, and connect the power supply.
- ② Select computer serial port and baud rate and click connect serial port.
- ③ Click start button and the current inclination angle of the incliner in X and Y directions will be displayed on the screen.

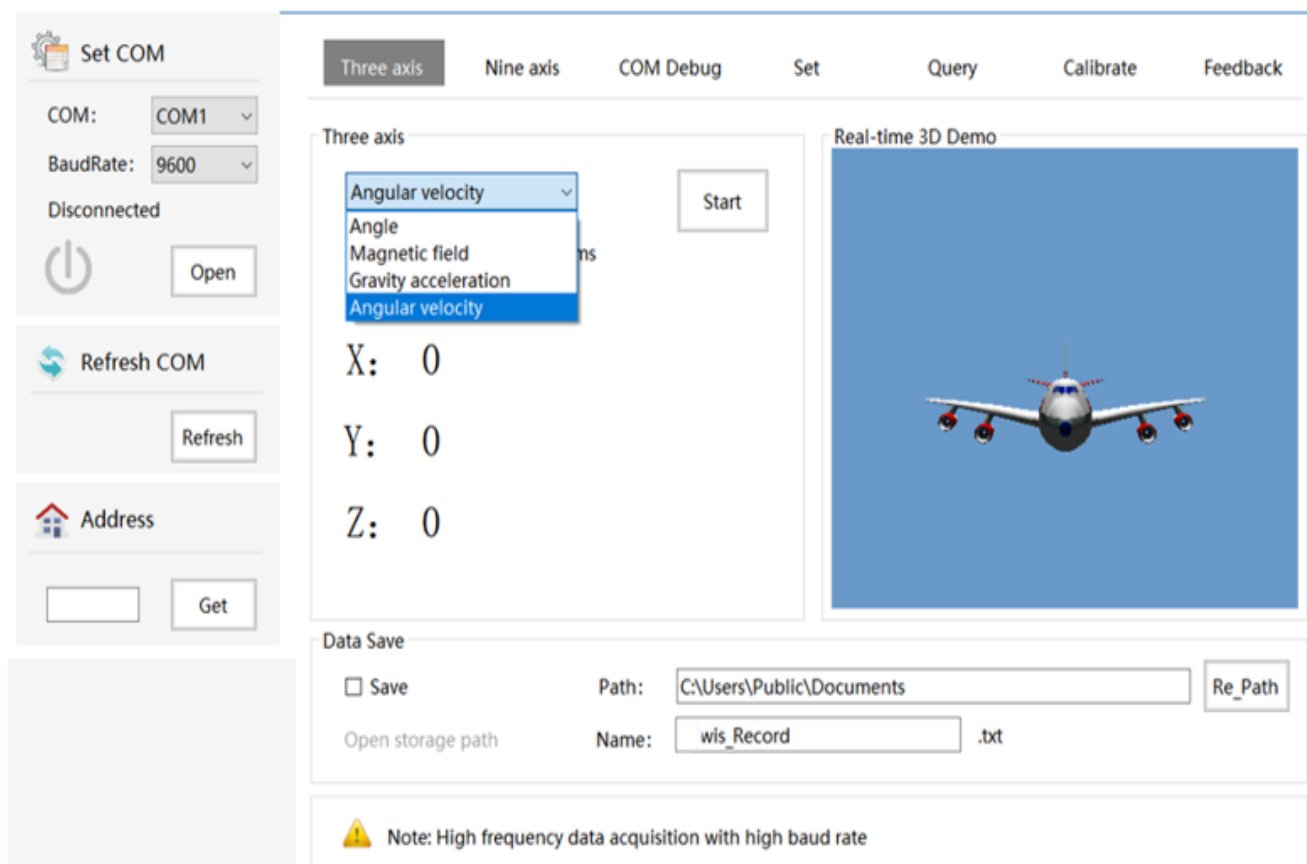


Figure 4. Software Debugging Interface



## DIMENSIONS

### Outline Dimensions

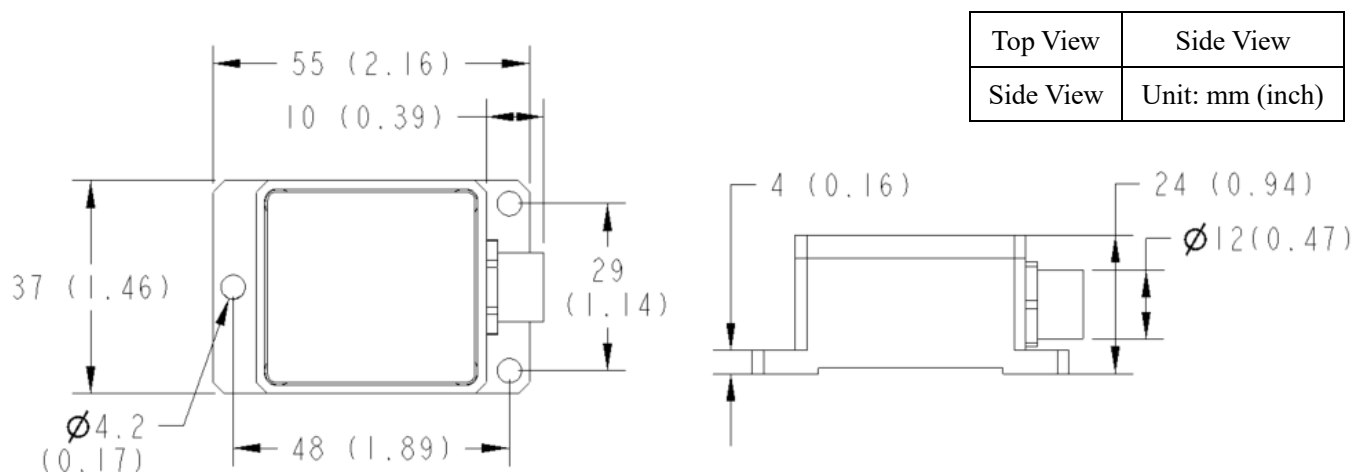


Figure 5. Outline Dimensions

### PCB Size

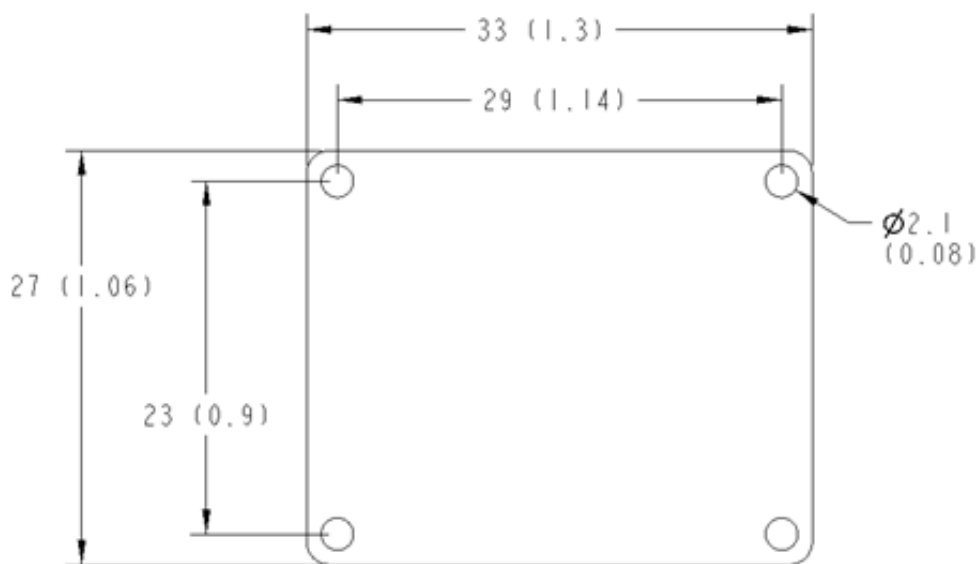


Figure 6. PCB Outline

## MECHANICAL CHARACTERISTIC

Connector	Metal Joint (Cable 1.5m)
Protection Level	IP67
Shell Material	Magnesium aluminum alloy anodizing
Installation	Four M4 screws



## ORDERING INFORMATION

Part Number	Buy Now	IP Level
IMU-1221-R02-232	 *  *	IP65 Package/Metal joint
IMU-1221-R02-485	 *  *	IP65 Package/Metal joint

\*: both  and  are our online store icons. Our products can be ordered from either one of them with the same pricing and delivery time.

## EXECUTIVE STANDARD

- National Standard for Static Calibration of Biaxial Inclination Sensors (Draft)
- GB/T 191 SJ 20873-2003 General Specification for Tiltmeters and Levelling Devices

## NOTICE

1. It is important to carefully read and follow the warnings, cautions, and product-specific notes provided with electronic components. These instructions are designed to ensure the safe and proper use of the component and to prevent damage to the component or surrounding equipment. Failure to follow these instructions could result in malfunction or failure of the component, damage to surrounding equipment, or even injury or harm to individuals. Always take the necessary precautions and seek professional assistance if unsure about proper use or handling of electronic components.
2. Please note that the products and specifications described in this publication are subject to change without prior notice as we continuously improve our products. Therefore, we recommend checking the product descriptions and specifications before placing an order to ensure that they are still applicable. We also reserve the right to discontinue the production and delivery of certain products, which means that not all products named in this publication may always be available.
3. This means that while ATI may provide information about the typical requirements and applications of their products, they cannot guarantee that their products will be suitable for all customer applications. It is the responsibility of the customer to evaluate whether an ATI product with the specified properties is appropriate for their particular application.
4. ATI warrants its products to perform according to specifications for one year from the date of sale, except when damaged due to excessive abuse. If a product fails to meet specifications within one year of the sale, it can be exchanged free of charge.
5. ATI reserves the right to make changes or discontinue products or services without notice. Customers are advised to obtain the latest information before placing orders.
6. All products are sold subject to terms and conditions of sale, including those pertaining to warranty, patent infringement, and limitation of liability. Customers are responsible for their applications using ATI products, and ATI assumes no liability for applications assistance or customer product design.





7. ATI does not grant any license, either express or implied, under any patent right, copyright, mask work right, or other intellectual property right of ATI.
8. ATI's publication of information regarding third-party products or services does not constitute approval, warranty, or endorsement.
9. ATI retains ownership of all rights for special technologies, techniques, and designs for its products and projects, as well as any modifications, improvements, and inventions made by ATI.
10. Despite operating the electronic modules as specified, malfunctions or failures may occur before the end of their usual service life due to the current state of technology. Therefore, it is crucial for customer applications that require a high level of operational safety, especially in accident prevention or life-saving systems where the malfunction or failure of electronic modules could pose a risk to human life or health, to ensure that suitable measures are taken. The customer should design their application or implement protective circuitry or redundancy to prevent injury or damage to third parties in the event of an electronic module malfunction or failure.